

MISTRAL

design Edward Barber & Jay Osgerby

colours

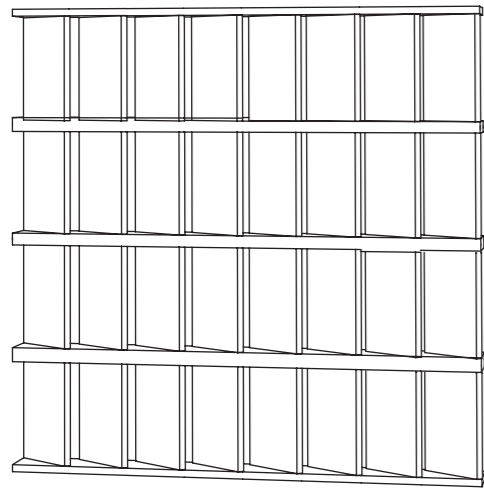
sizes

technical features

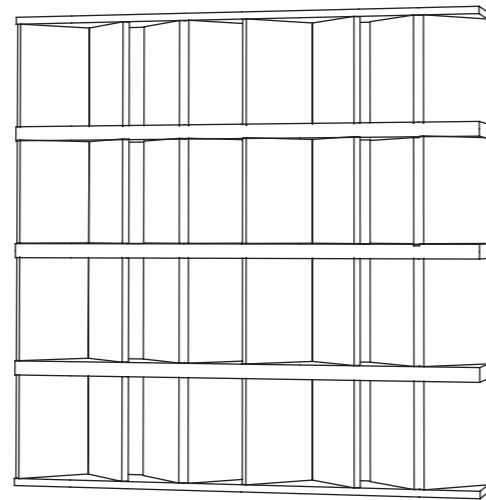
packing

MU
TIN
A[®]

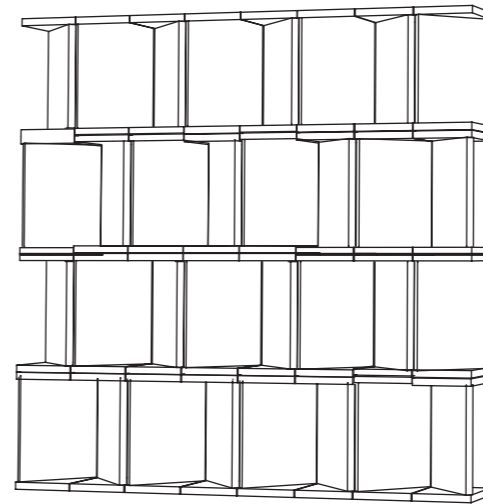
Installation Ideas



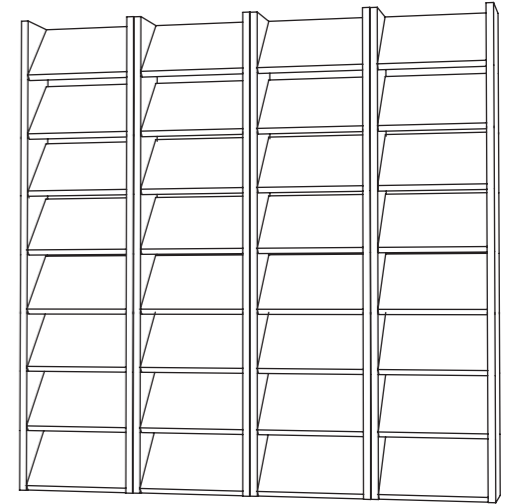
Posa verticale 1
Vertical installation 1



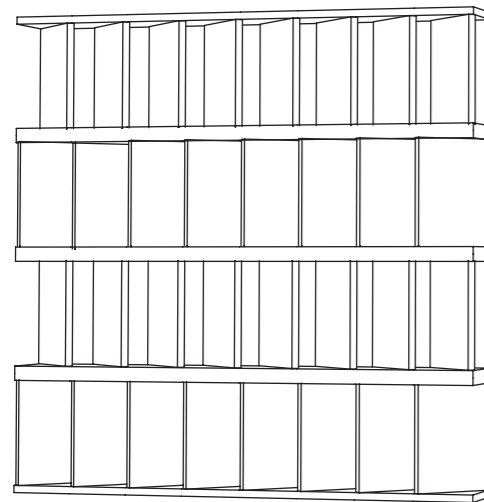
Posa verticale 2
Vertical installation 2



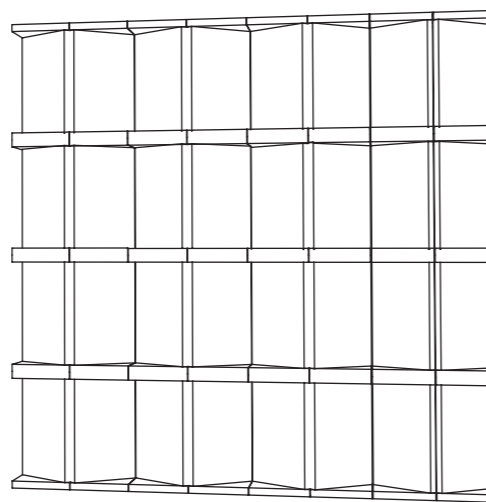
Posa verticale 5
Vertical installation 5



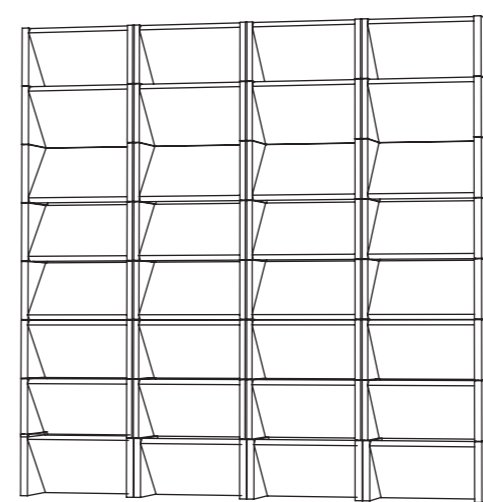
Posa orizzontale 1
Horizontal installation 1



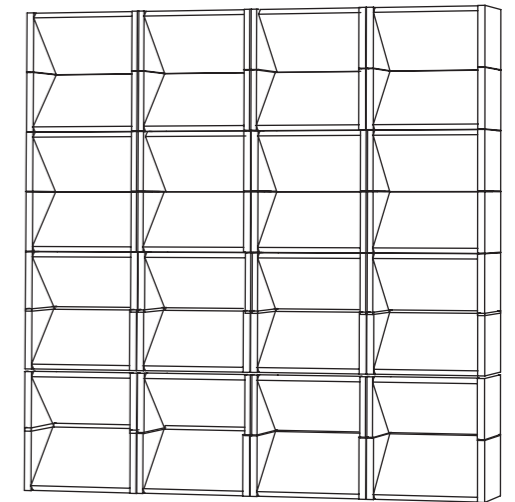
Posa verticale 3
Vertical installation 3



Posa verticale 4
Vertical installation 4



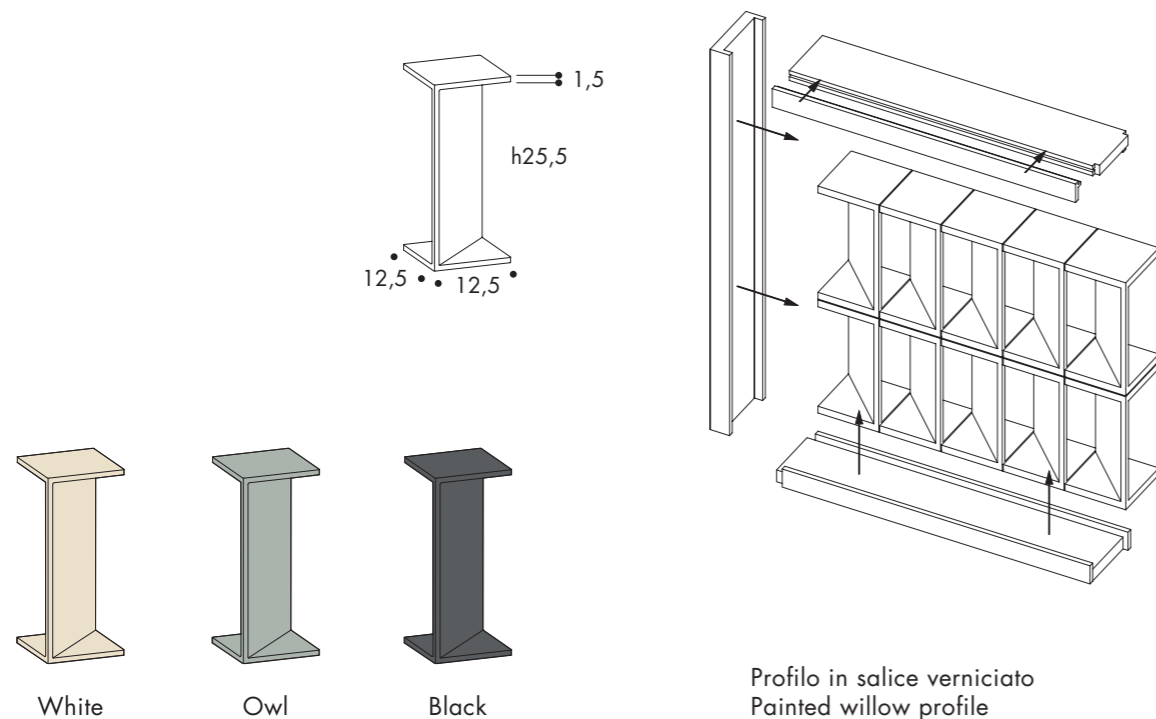
Posa orizzontale 2
Horizontal installation 2



Posa orizzontale 3
Horizontal installation 3

Sizes & Colors

design	Barber & Osgerby	2018
production	artisanal	
material	terra cotta prodotta per colaggio tape casting terracotta	
*	misure nominali/nominal sizes	
size	12,5·25,5·12,5 cm/* 4 _{59/64} "·10 _{3/64} "· 4 _{59/64} "	



Per facilitare il montaggio di questi elementi è disponibile Mutina sigillante, un sigillante organico eco-compatibile acquistabile separatamente.

To make the installation of these items easier, a Mutina sealant is now available: an organic and eco-friendly sealing material, which is sold separately.

Technical Features

Elementi di produzione artigianale prodotti per colaggio di spessore 12,5cm. Gli elementi devono in ogni caso rispettare le norme tecniche in materia di costruzioni vigenti nel paese di utilizzo. Per il territorio nazionale italiano, in particolare, la norma NTC 2018 DECRETO MIN 27/01.

Prodotto adatto sia per spazi residenziali che commerciali, purchè installato con profili in salice verniciati in tono. Superfici massime consentite: 2mt x 3mt o 3mt x 2mt. Per la chiusura a soffitto è previsto un profilo terminale con cornice smontabile. Per ottenere un risultato estetico funzionale e ottimale, si consiglia di non tagliare i pezzi ma di montare questi elementi interi, adattando di conseguenza il profilo in legno di salice.

Prodotto adatto per interni ed esterni secondo norma UNI EN 722-22 con marcatura "F1 - esposizione moderata".

Non structural artisanal partition elements, in tape casting terracotta, 12,5 cm thick . These elements must in any case comply with the technical standards of construction regulation, applicable in the country where they are installed. For the Italian national territory, in particular, they should comply with standard NTC 2018 DECRETO MIN 27/01.

This product is suitable for both residential and commercial areas, to be installed with painted willow profile with maximum surfaces of 2mt x 3mt or 3mt x 2mt. A top profile with removable sides is provided for ceiling fixing. In order to achieve an optimal aesthetic outcome we advise to avoid cutting the pieces and install them whole adjusting the wooden willow profile accordingly.

This product is suitable for indoor and outdoor areas complying with UNI EN 722-22 marked "F1-moderate exposure"

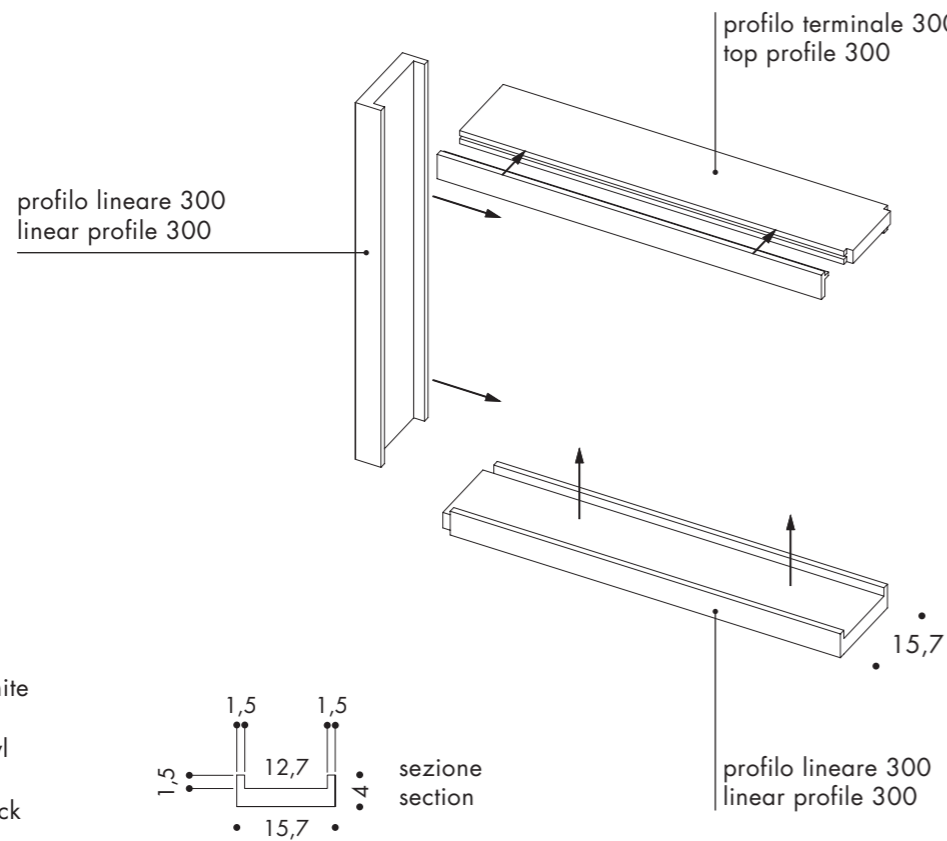
NORMA STANDARD	CARATTERISTICHE FEATURES	MISTRAL
UNI EN ISO 10545-3	assorbimento d'acqua/ water absorption	0,5 ≤ X ≤ 3

Packing

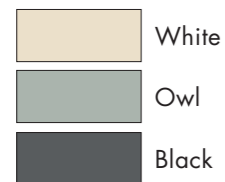
FORMATO SIZE	PZ-MQ PCS-SQM	PZ-SCAT PCS-BOX	MQ-SCAT SQM-BOX	SCAT-PAL BOX-PAL	KG-SCAT KG-BOX	KG-PAL KG-PAL	MQ-PAL SQMS-PAL
12,5·25,5·12,5 cm	31,4	3	0,091	45	6,6	297	4,30

Complementary Pieces

items	<p>Profilo lineare in salice verniciato in tono (adatto per uso esterno) Linear painted willow profile (also suitable for outdoor use)</p> <p>Profilo terminale di legno di salice (adatto per uso esterno) con un'estremità sagomata ed un lato rimovibile per facilitare il montaggio della chiusura a soffitto. Top painted willow profile (also suitable for outdoor use) with one shaped end to make clamping easier.</p>
size	15,7·300·4 cm/* 6 _{3/16} " · 46 _{29/64} " · 1 _{37/64} "
*	misure nominali/nominal sizes



Colors



Complementary Pieces

	Mutina sigillante/Mutina sealant
material	<p>Sigillante organico eco-compatibile esente da solventi prodotto da Kerakoll in esclusiva per Mutina Eco-friendly neutral silane sealant with reduced solvent content product from Kerakoll exclusively for Mutina.</p>
features	<p>Mutina sigillante sviluppa un'elevata adesione su tutti i materiali senza l'utilizzo di primer ed un'elasticità permanente su superfici assorbenti e inassorbenti. Mutina sealant develops a high level of adhesion on all materials without the use of primers and permanent elasticity on absorbent and non-absorbent surfaces.</p>
use	<p>In interno, esterno e per sigillature di elementi costruttivi Suitable for indoor and outdoor use, it gives waterproof sealing of construction elements.</p>



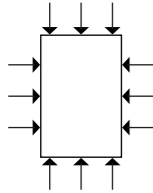
Wall Anchoring Scheme

Edward Barber & Jay Osgerby

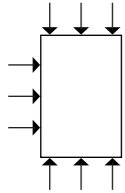
Schema di ancoraggio/ Wall Anchoring Scheme



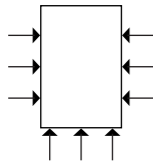
Fisher SXR fissaggio prolungato 8x80
Fisher long shaft fixing SXR 8x80



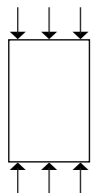
Ancoraggio su 4 lati MAX h300x200 cm
Anchoring on 4 sides MAX h300x200 cm



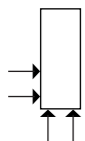
Ancoraggio su 3 lati MAX h300x200 cm
Anchoring on 3 sides MAX h300x200 cm



Ancoraggio su 3 lati MAX h300x200 cm
Anchoring on 3 sides MAX h300x200 cm



Ancoraggio su 2 lati MAX h300x200 cm
Anchoring on 2 sides MAX h300x200 cm



Ancoraggio su 2 lati MAX h250x100 cm
Anchoring on 2 sides MAX h250x100 cm



Barber e Osgerby inaugurano il loro studio londinese nel 1996, dopo essersi laureati al Royal College of Art di Londra. Il loro approccio multidisciplinare si basa sui confini del design industriale, dell'architettura e dell'arte. I loro lavori includono collezioni per Knoll, Vitra, B & B Italia, Cappellini, Venini e Flos, limited edition e commissioni pubbliche come la London 2012 Olympic Torch e la moneta da 2 sterline disegnata per la Royal Mint. La prima monografia estensiva loro dedicata, pubblicata da Rizzoli New York, è del 2011. Entrambi sono Royal Designers for Industry (RDI) e Honorary Doctors of Art. Il loro lavoro è nelle collezioni permanenti di musei in tutto il mondo, come il V&A e il Design Museum di Londra, il Metropolitan Museum of Art di New York o l'Art Institute di Chicago.

Barber and Osgerby opened their London studio in 1996, having graduated from the Royal College of Art in London. Their multidisciplinary approach pushed the boundaries of industrial design, architecture and art. Their work includes collections for Knoll, Vitra, B & B Italia, Cappellini, Venini and Flos, limited edition pieces and commissions such as the London 2012 Olympic Torch and the £2 coin designed for the Royal Mint. The first extensive monograph on the pair was published by Rizzoli New York in 2011. They are both Royal Designers for Industry (RDI) and Honorary Doctors of Art. Their work is included in the permanent collections of museums around the world, such as the V&A and Design Museum in London, the Metropolitan Museum of Art in New York and Chicago's Art Institute.

MUTINA.IT

Follow us on

